

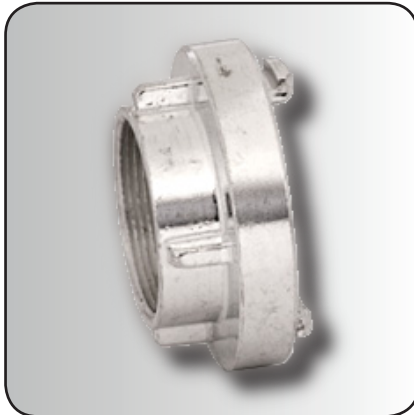
APPLICATIONS AND PROPERTIES

The Storz fitting is mainly used in flat fire hoses especially in central and northern Europe. Also used in discharge of cisterns of pulverulent material, hydrocarbons, etc. The fitting has 2 characteristic pins and performs the closure by rotating with each other a quarter of a turn facing said pins with each other. The female and male threads are of type BSPP (parallel gas thread). The material used is normally forged aluminum (working pressure up to 12 bar) The joints are NBR white or black.

MODELS

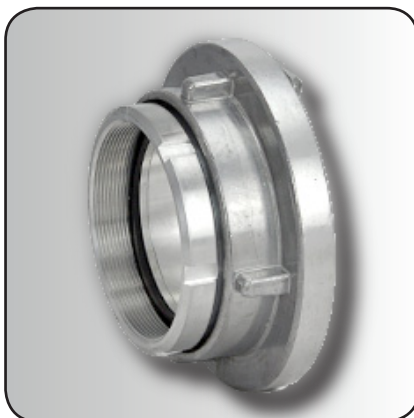


| HOSE | | | | |
|------|--------|--------|--------|-----------|
| ND | Ø HOSE | K (mm) | L (mm) | ALUMINUM |
| 25D | 19 | 31 | 50 | 060301008 |
| 25D | 25 | 31 | 50 | 060301010 |
| 32 | 32 | 44 | 70 | 060301020 |
| 38 | 38 | 51 | 90 | 060301030 |
| 52C | 25 | 66 | 90 | 060301034 |
| 52C | 32 | 66 | 90 | 060301036 |
| 52C | 38 | 66 | 90 | 060301038 |
| 52C | 45 | 66 | 90 | 060301039 |
| 52C | 52 | 66 | 90 | 060301040 |
| 65 | 65 | 81 | 95 | 060301050 |
| 75B | 65 | 89 | 125 | 060301056 |
| 75B | 70 | 89 | 125 | 060301058 |
| 75B | 75 | 89 | 125 | 060301060 |
| 90 | 90 | 105 | 160 | 060301070 |
| 100 | 100 | 115 | 150 | 060301080 |
| 110A | 100 | 133 | 170 | 060301088 |
| 110A | 110 | 133 | 170 | 060301090 |
| 125 | 125 | 148 | 200 | 060301100 |
| 150 | 150 | 160 | 180 | 060301110 |



FEMALE THREAD

| ND | THREAD | K (mm) | ALUMINUM |
|------|--------|--------|-----------|
| 25D | 3/4" | 31 | 060302008 |
| 25D | 1" | 31 | 060302010 |
| 32 | 1 1/4" | 44 | 060302020 |
| 38 | 1 1/2" | 51 | 060302030 |
| 52C | 1" | 66 | 060302034 |
| 52C | 1 1/4" | 66 | 060302036 |
| 52C | 1 1/2" | 66 | 060302038 |
| 52C | 2" | 66 | 060302040 |
| 52C | 2 1/2" | 66 | 060302042 |
| 65 | 2 1/2" | 81 | 060302050 |
| 75B | 2" | 89 | 060302056 |
| 75B | 2 1/2" | 89 | 060302058 |
| 75B | 3" | 89 | 060302060 |
| 90 | 3" | 105 | 060302070 |
| 100 | 4" | 115 | 060302080 |
| 110A | 4" | 133 | 060302088 |
| 110A | 4 1/2" | 133 | 060302090 |
| 125 | 5" | 148 | 060302100 |
| 150 | 6" | 160 | 060302110 |



SWIVEL FEMALE THREAD

| ND | THREAD | K (mm) | ALUMINUM |
|------|--------|--------|-----------|
| 52C | 2" | 66 | 060306084 |
| 75B | 3" | 89 | 060306086 |
| 110A | 4" | 133 | 060306088 |



MALE THREAD

| ND | THREAD | K (mm) | ALUMINUM |
|------|--------|--------|-----------|
| 25D | 3/4" | 31 | 060303008 |
| 25D | 1" | 31 | 060303010 |
| 32 | 1 1/4" | 44 | 060303020 |
| 38 | 1 1/2" | 51 | 060303030 |
| 52C | 1" | 66 | 060303034 |
| 52C | 1 1/4" | 66 | 060303036 |
| 52C | 1 1/2" | 66 | 060303038 |
| 52C | 2" | 66 | 060303040 |
| 52C | 2 1/2" | 66 | 060303042 |
| 65 | 2 1/2" | 81 | 060303050 |
| 75B | 2" | 89 | 060303056 |
| 75B | 2 1/2" | 89 | 060303058 |
| 75B | 3" | 89 | 060303060 |
| 90 | 3" | 105 | 060303070 |
| 100 | 4" | 115 | 060303080 |
| 110A | 4" | 133 | 060303088 |
| 110A | 4 1/2" | 133 | 060303090 |
| 125 | 5" | 148 | 060303100 |
| 150 | 6" | 160 | 060303110 |



LID WITH CHAIN

| ND | K (mm) | ALUMINUM |
|------|--------|-----------|
| 25D | 31 | 060305010 |
| 32 | 44 | 060305020 |
| 38 | 51 | 060305030 |
| 52C | 66 | 060305040 |
| 65 | 81 | 060305050 |
| 75B | 89 | 060305060 |
| 90 | 105 | 060305070 |
| 100 | 115 | 060305080 |
| 110A | 133 | 060305090 |
| 125 | 148 | 060305100 |
| 150 | 160 | 060305110 |



REDUCTIONS

| ND | K (mm) | K (mm) | ALUMINUM |
|------------|--------|--------|-----------|
| 52C - 25D | 66 | 31 | 060304010 |
| 75B - 52C | 89 | 66 | 060304020 |
| 110A - 75B | 133 | 89 | 060304030 |



GASKETS

| ND | NBR |
|------|-----------|
| 25D | 060306010 |
| 32 | 060306020 |
| 38 | 060306030 |
| 52C | 060306040 |
| 65 | 060306050 |
| 75B | 060306060 |
| 90 | 060306070 |
| 100 | 060306080 |
| 110A | 060306090 |
| 125 | 060306100 |
| 150 | 060306110 |